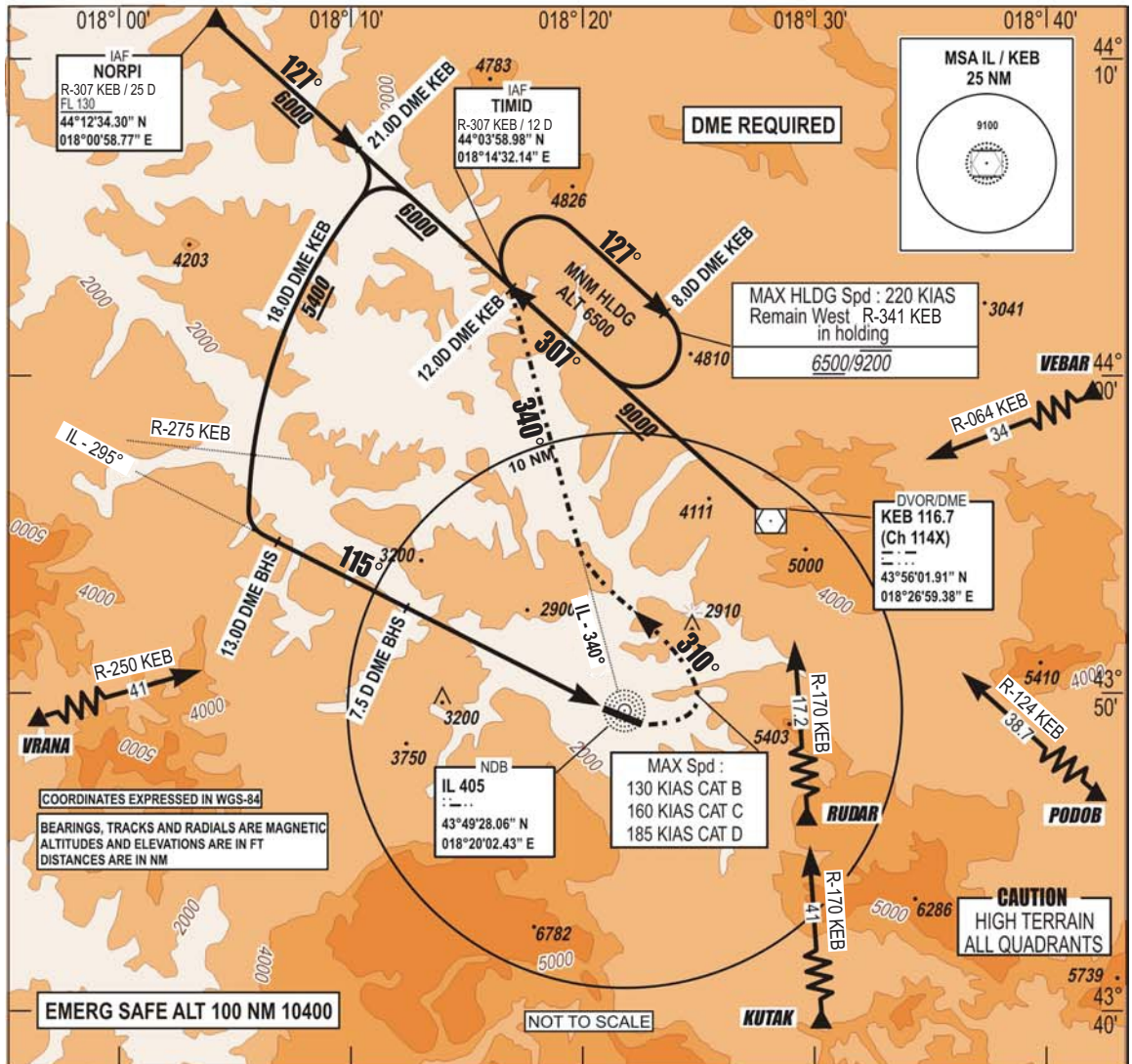


**INSTRUMENT  
APPROACH  
CHART - ICAO**

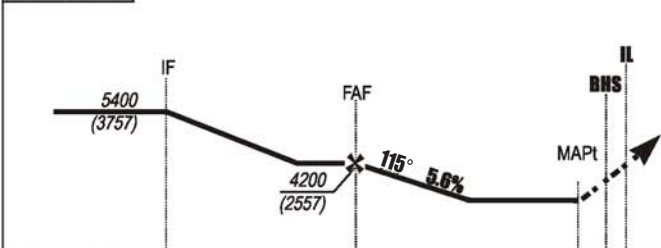
**AERODROME ELEV 1705 FT TRANSITION  
HEIGHTS RELATED TO  
THR RWY 11 ELEV 1643 FT  
ALTITUDE  
10 000 FT  
VAR 5°E (2020)**

**APP 136.450; 119.775  
TWR 118.250  
GND 121.900  
ATIS 124.125**

**SARAJEVO (LQSA)  
NDBy RWY 11**



**ILS BHS 110.7  
DME Ch 44X  
GP 330.2**



**MISSED APPROACH:**  
Turn LEFT on track 310°  
climbing to 6500.  
Intercept and follow IL-340° to TIMID.  
Do NOT TURN before MAPT.

THR → (NM)	12.9	7.4	1.4
BHS → (NM)	13	7.5	1.5

RWY	KNOTS	60	120	180	240	300	360
11	FPM	180	360	540	720	900	1080

CHG: AD ELEV;

CAT	NDB MAPP		CIRCLING	
	OCA	OCH	OCA	OCH
A			3830	2180
B			3830	2180
C	3830	2180	5050	3400
D			5820	4170

OCA / H published in feet.

CIRCLING : - North of AD only  
- Night not authorized

\* CLIMB RATE 3.0%  
CAUTION: MISSED APPROACH  
MINIMUM CLIMB RATE TO 6000'

THIS PAGE INTENTIONALLY LEFT BLANK